

# SCHNEIDER SENATOR

Cutting Technology

Technical Data	185	260
A Cutting width, mm/inch	1.850 / 72,83 <sup>1)</sup>	2.600 / 102,36
B Feed depth, mm/inch	1.970 / 77,56 <sup>2)</sup>	2.725 / 107,28
C Clamp opening, mm/inch	165 / 6,50	165 / 6,50
D Table height, mm/inch	900 / 35,43	900 / 35,43
E Machine width - without side tables, mm/inch	3.025 / 119,09	4.020 / 158,27
F Machine width - including side tables, mm/inch	3.650 / 143,7	4.600 / 181,10
G Machine depth, mm/inch	3.521 / 138,62	4.670 / 183,86
H Machine height, mm/inch	1.680 / 66,14	1.850 / 72,83
I Front table depth, mm/inch	730 / 28,74	750 / 29,53
Required power, kW	7,5	11,0
Weight net, kg	6.630	10.500
Clamp pressure, daN. min.	400	500
max.	6.000	8.000
Smallest cut automatic, mm/inch	100 / 3,94 <sup>3)</sup>	110 / 4,33
Smallest cut manual, mm/inch	90 / 3,54	100 / 3,94
Backgauge positioning speed (frequency controlled), mm/s	0-300 / 0-11,81	0-250 / 0-9,84
Static floor load, daN/m <sup>2</sup>	960	900
Contact area load, daN/cm <sup>2</sup> (+/- 12%)	0,7	0,8
Pressurized air required, bar	6	6

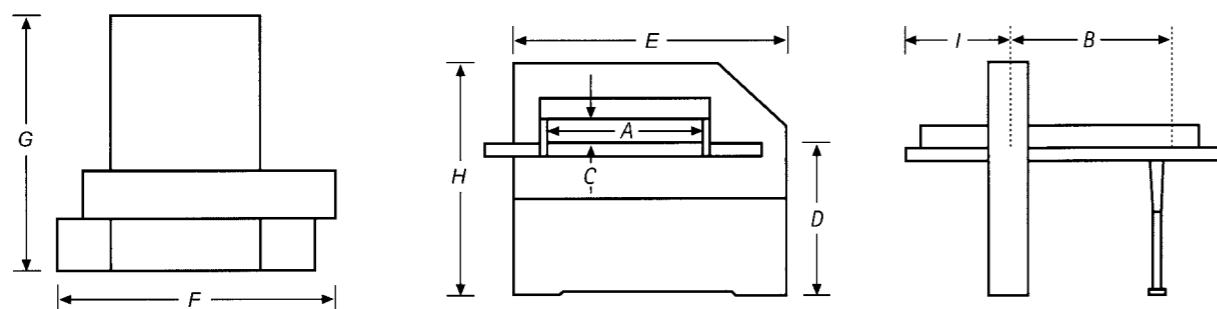
Subject to technical modifications. Errors excepted.

1) Can be ordered with a larger cutting width: 1906 mm

2) Feed depth for shortened smallest cut: 1920 mm

3) Optional: shortened smallest cut 60 mm or 40 mm with reduction of the max. clamp pressure

## Measurements



**SCHNEIDER  
SENATOR**

Cutting Technology

dealer  
stamp

For big cuts.

**E**-line 185 & 260



Senator Technology

# Cutting with style.



E-Line 260 in a cutting system: The profit center with two large transfer tables, jogger and restacker.

## Quality is decisive.

He who wants to produce in large format, needs smooth machines of highest precision. With more than four decades of experience in the manufacturing of high-quality XXL cutters Schneider Senator provides a long and trouble-free run - even in non-stop production conditions. With this compact design Schneider Senator realizes large format processing on small space. Thereby, formats of up to 1550 x 2050 mm can be turned directly under the knife in an E-Line 260.

These high-speed cutters can take a lot of abuse, because Senators live longer. The Senators E-Line 185 and 260 are based on a solid cast iron frame. And you'll benefit from mechanical / hydraulic drive that had proven over many years. The position of flywheel and motor gives the machine an excellent weight distribution. The pneumatic clutch guarantees an excellent overload protection. The best proof for an approved stability of the big Senators are various users, who exclusively operate our machines for cutting of problematic materials like rigid PVC or aluminium plates.

The latest infrared safety curtains and the diverse-redundant cutting system (two independent, mutually verifying micro-processors) guarantee the highest level of safety. High-quality, specially polished, cast-iron airfilm machine tables are a great asset when it comes to handling heavy stock. The first-class price/performance ratio ensures minimum maintenance, longevity and outstanding servability. Optionally, the cutting width of Senator E-Line 185 can be extended to 190,6 cm.

Efficient sheet handling in large format is a must. Therefore, Schneider Senator offers perfectly matching peripherals to these formats from automatic feeding and 4-side trimming without human intervention until exact restacking. These handling devices not only relieve your operators but also lead to a significant increase in productivity.

## Everything under control: The computer-control

Different control types	'C'	'CP'	'CT'
TFT-colour monitor	5 inch	10,4 inch	10,4 inch
Alphanumeric flat-foil keyboard with logical key blocks and mechanical pressure point keys	x	x	x
Touch-screen soft keys			x
Memory capacity	6.000 steps	6.000 steps	6.000 steps
Number of programmes	unlimited <sup>1)</sup>	unlimited <sup>1)</sup>	unlimited <sup>1)</sup>
Diverse-redundant cutting system (two independent, mutually verifying microprocessors)	x	x	x
Graphic display of the programme flow			x
Incorrect cut control (no cut release when position tolerance is exceeded)	x	x	x
Execution of desired dimensions, without disturbing the original programme	x	x	x
Measuring system: inches / mm / cm	x	x	x
Indication of free storing spaces	x	x	x
Measurement precision: 1/100 mm	x	x	x
Service cut counter	x	x	x
Programmable cut counter	x	x	x
Air on/off	x	x	x
Fault diagnosis	x	x	x
Calculator function	x	x	x
Time and date display	x	x	x
Programme erase protection	x	x	x
Data protection in case of power failure	x	x	x
Language selection	x	x	x
IC-memory-card			x
CIP 3/4-compatible			x <sup>2)</sup>
Serial interface			x <sup>2)</sup>
Logging the operational data			x <sup>2)</sup>
Printer port			x <sup>2)</sup>

### Programming options:

Simple cut, repeat cut, programme cut	x	x	x
Digitally adjustable prepress time	x	x	x
Differential measurement	x	x	x
Clamp pressure adjustment via display, controlled by proportional valve			x
Programming by value input or actual transmission	x	x	x
Infinitely variable backgauge speed	x	x	x
Function "no cut"	x	x	x
Linear programme correction facility	x	x	x
Percentagewise programme correction facility			x
Automatic paper ejection and programmable paper ejection marks	x	x	x
Operator information programmable			x
Cut optimizer			x
External functions, external programming			x

<sup>1)</sup> Only limited by max. steps to be stored, <sup>2)</sup> option

## For big cuts: Fully equipped.

- High-speed cutter Senator E-Line 185 and 260 with mechanical knife drive and hydraulic clamp
- Computer-control with TFT-colour monitor
- Electrical drive equipment: 400 volts, 50 cycles (other voltage optional)
- CE & EN 1010 - conform
- Solid cast iron frame
- Pneumatic clutch with overload protection
- Ball race lead screw
- Infrared safety curtain
- Safety bolt
- Specially polished cast iron machine table, airblown
- Optical cut indicator
- 2 knives (HSS quality)
- 5 sinus cutting sticks
- Tools
- Colour: RAL 7035, light grey

## Options: The Extras

- TrimmMaster (automatic waste removal)
- Swinging and/or tilting backgauge, programme-controlled
- Cutting width enlarged to 190,6 cm
- Airfilm table front/rear separately switchable
- Tungsten carbide knife
- Various side table sizes available
- Special colour according to RAL-Scale
- Miscellaneous peripheral equipment
- CIP3/4-processing